

STRAIN NAME: N/A  
Matrix: Tincture 2000

**Blue Moon Hemp**  
3100 NW 2nd Ave, Boca Raton,  
FL 33431




**SAMPLE: D803030-12**

Harvest/Lot ID: 18636

Batch#: 18636; Batch Size: N/A Ordered:  
03/22/2018; Sampled: N/A Completed:  
03/26/2018; Expires: 03/26/2019

Sampling Method: Client Method



- Pesticides - NT
- Microbials - NT
- Mycotoxins - NT
- Heavy Metals - NT
- Terpenes - NT
- Residual Solvents - NT
- Filth - NT
- Water Activity - NT
- Moisture - NT

### Cannabinoids

Analyte	Weight (%)	mg/g	RPD%
THCa	<LOQ	<LOQ	
D9-THC	<LOQ	<LOQ	
D8-THC	<LOQ	<LOQ	
THCV	<LOQ	<LOQ	
THCVa	<LOQ	<LOQ	
<b>TOTAL THC</b>	<b>&lt;LOQ</b>	<b>&lt;LOQ</b>	
CBDa	<LOQ	<LOQ	
CBD	7.37	73.68	
CBDV	0.01	0.15	
CBDVa	<LOQ	<LOQ	
<b>TOTAL CBD</b>	<b>7.37</b>	<b>73.68</b>	
CBN	<LOQ	<LOQ	
CBG	<LOQ	<LOQ	
CBC	<LOQ	<LOQ	
<b>TOTAL CANNABINOIDS</b>	<b>7.38</b>	<b>73.83</b>	

### Cannabinoids

**0.0%**

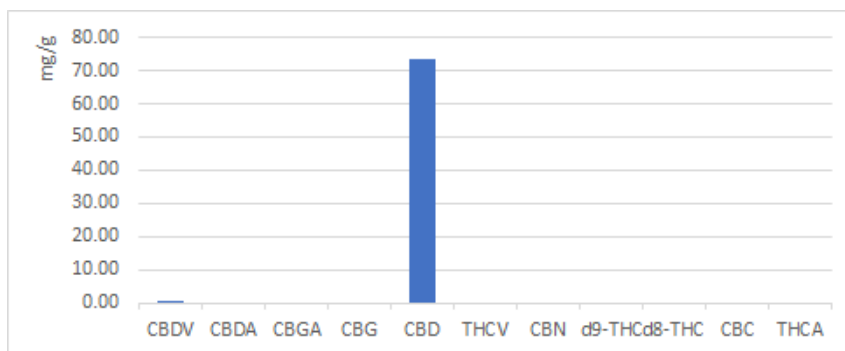
**Total THC**

**7.37%**

**Total CBD**

Total THC= THCa x 0.877 + d9-THC

Total CBD= CBDa x 0.877 + CBD





STRAIN NAME: N/A  
Matrix: Tincture 2000

<p>Blue Moon Hemp 3100 NW 2nd Ave, Boca Raton, FL 33431</p>		<p><b>SAMPLE: D803030-12</b></p>
		<p>Harvest/Lot ID: 18636</p>
		<p>Batch#: 18636; Batch Size: N/A Ordered: 03/22/2018; Sampled: N/A Completed: 03/26/2018; Expires: 03/26/2019</p>
		<p>Sampling Method: Client Method</p>

**Cannabinoid Profile Test Results** - Analysis Method: SOP.T.30.050, SOP.T.40.020  
 Full spectrum cannabinoid analysis utilizing High Performance Liquid Chromatography with UV detection (HPLC-UV). (Method: SOP.T.30.050 for sample prep and Shimadzu High Sensitivity Method SOP.T.40.020 for analysis. LOQ for all cannabinoids is 1 mg/L). D9-THC, THCA, CBD, CBDA are State accredited analytes, the rest are "info only."

